



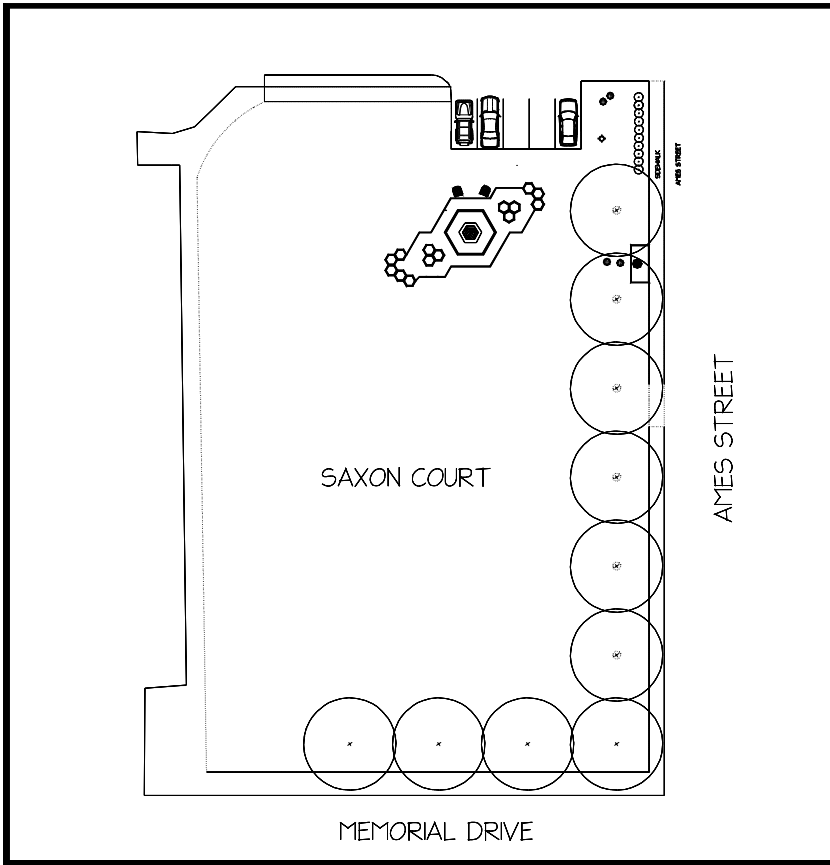
Brought to you by:
MIT Office of Sustainability, Grounds
Services, and UA Sustain



Field Guide to
The Hive
Sustainability Garden

A visitor's guide to the pollinator-
attracting plants of the garden

2019 - 2020



1 BUTTERFLY WEED

1 AROMATIC ASTER

1 DWARF HUMMINGBIRD MINT

1 CHOCOLATE SNAKEROOT / JOE PYE WEED

1 WHITE SWAN PURPLE CONEFLOWER

1 ROCK SOAPWORT

1 DROPMORE CATMINT

1 STONECROP MR. GOODBUD

2 TANGO HUMMINGBIRD MINT

1 AROMATIC ASTER

1 NEW YORK IRONWEED

1 BLUE STAR FLOWER

1 BLUE FALSE INDIGO

1 CLASS ACT SEDUM

1 BEE BALM

1 SHENANDOAH SWITCH GRASS

1 DROPMORE CATMINT

1 WHITE CLOUD LESSER CALAMINT

1 WHITE SWAN PURPLE CONEFLOWER

1 CLASS ACT SEDUM

1 BEE BALM

1 DARK KNIGHT BLUE MIST SPIREA

2 CONEFLOWER SOMBRERO ADOBE ORANGE

1 ROSE MARVEL SALVA

Group A

Group B

1 BUTTERFLY WEED

1 SHENANDOAH SWITCH GRASS

2 PURPLE CONEFLOWER

1 DROPMORE CATMINT

2 BLUE STAR FLOWER

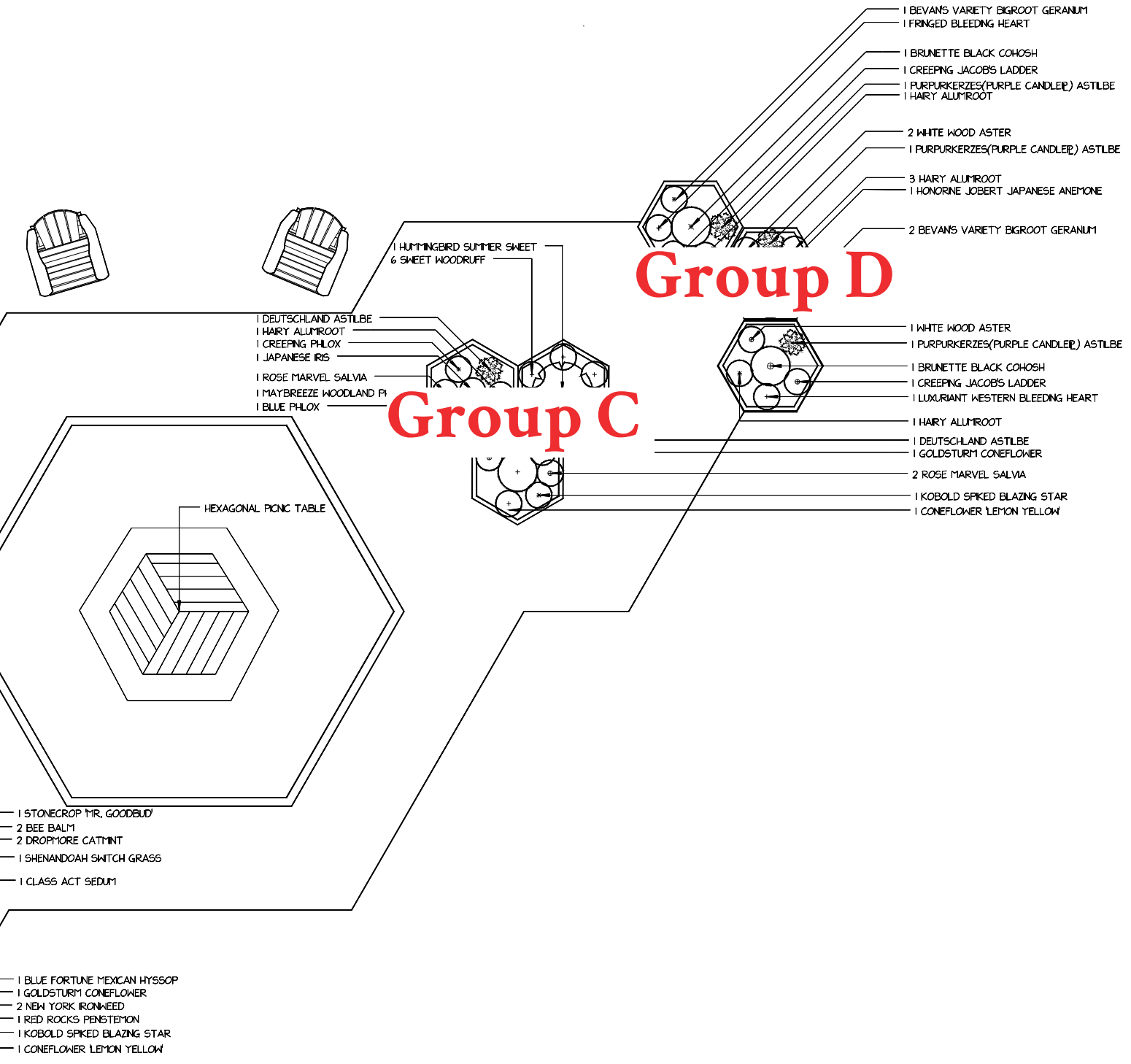
1 BUTTERFLY WEED

2 BEE BALM

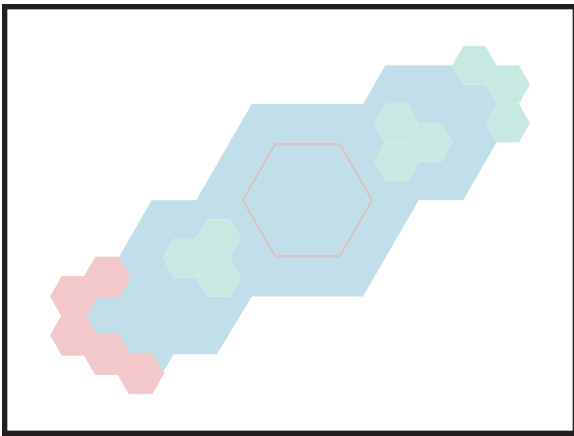
1 WHITE CLOUD LESSER CALAMINT

1 GRASS LEAVED GOLDENROD

1 GOLDSTURM CONEFLOWER



Map of the Hive



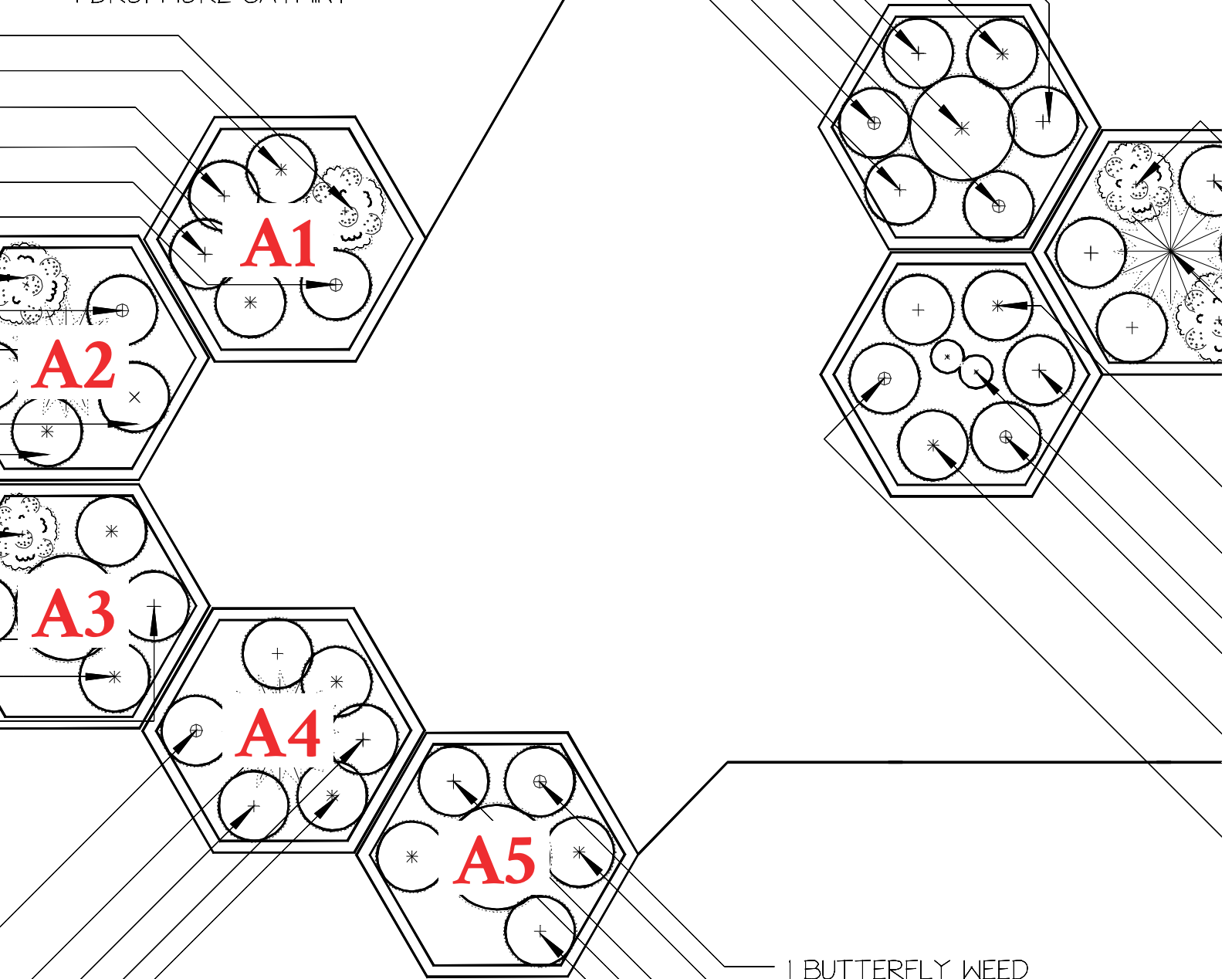
- 1 STONECROP 'MR. GOODBUD' _____
- 2 TANGO HUMINGBIRD MINT _____
- 1 AROMATIC ASTER _____
- 1 NEW YORK IRONWEED _____
- 1 BLUE STAR FLOWER _____
- 1 BLUE FALSE INDIGO _____

- 1 CLASS ACT SEDUM _____
- 1 BEE BALM _____
- 1 SHENANDOAH SWITCH GRASS _____
- 1 DROPMORE CATMINT _____
- 1 WHITE CLOUD LESSER CALAMINT _____
- 1 WHITE SWAN PURPLE CONEFLOWER _____

- 1 CLASS ACT SEDUM _____
- 1 BEE BALM _____
- 1 DARK KNIGHT BLUE MIST SPIREA _____
- 2 CONEFLOWER 'SOMBRERO ADOBE ORANGE' _____
- 1 ROSE MARVEL SALVIA _____

- 1 BUTTERFLY WEED _____
- 1 SHENANDOAH SWITCH GRASS _____
- 2 PURPLE CONEFLOWER _____
- 1 DROPMORE CATMINT _____
- 2 BLUE STAR FLOWER _____

- 1 CHOCOLATE SNAKEROOT / JOE PTE WEEED
- 1 WHITE SWAN PURPLE CONEFLOWER
- 1 ROCK SOAPWORT
- 1 DROPMORE CATMINT



- 1 BUTTERFLY WEEED
- 2 BEE BALM
- 1 WHITE CLOUD LESSER CALAMINT
- 1 GRASS LEAVED GOLDENROD
- 1 GOLDSTURM CONEFLOWER

Group A



Stonecrop 'Mr. Goodbud'

A1

Bloom: August



Tango Hummingbird Mint

A1

Bloom: Summer-Fall



Aromatic Aster

A1

Bloom: August-September



New York Ironweed

A1

Bloom: August-September



Blue Star Flower

A1, A4

Bloom: Early-Late Spring



Blue False Indigo

A1

Bloom: April-July



Class Act Sedum

A2, A3

Bloom: August-September



Bee Balm

A2, A3, A5

Bloom: Mid-Late Summer



Shenandoah Switchgrass

A2, A4

Bloom: Spring-Fall



Dropmore Catmint

A2, A4

Bloom: Summer-Early Fall



White Cloud Lesser Calamint

A2, A5

Bloom: June-September



White Swan Purple Coneflower

A2

Bloom: June-August



Dark Knight Blue Mist Spirea

A3

Bloom: July-September



Coneflower 'Sombrero Adobe

Orange', A3

Bloom: Late Spring-Summer



Rose Marvel Salvia

A3

Bloom: Early Spring-Summer



Butterfly Weed

A4, A5

Bloom: June-August



Purple Coneflower

A4

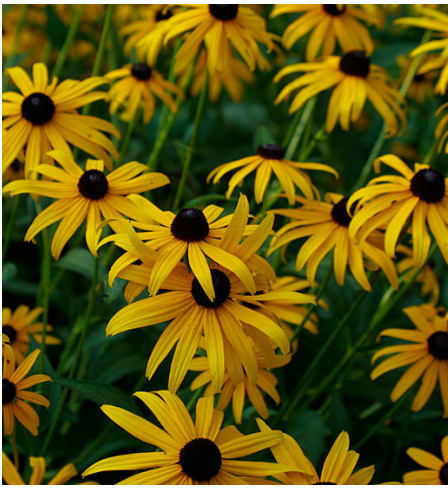
Bloom: June-August



Grass Leaved Goldenrod

A5

Bloom: July-September



Goldsturm Coneflower

A5

Bloom: Midsummer-Fall

1 BUTTERFLY WEED

1 AROMATIC ASTER

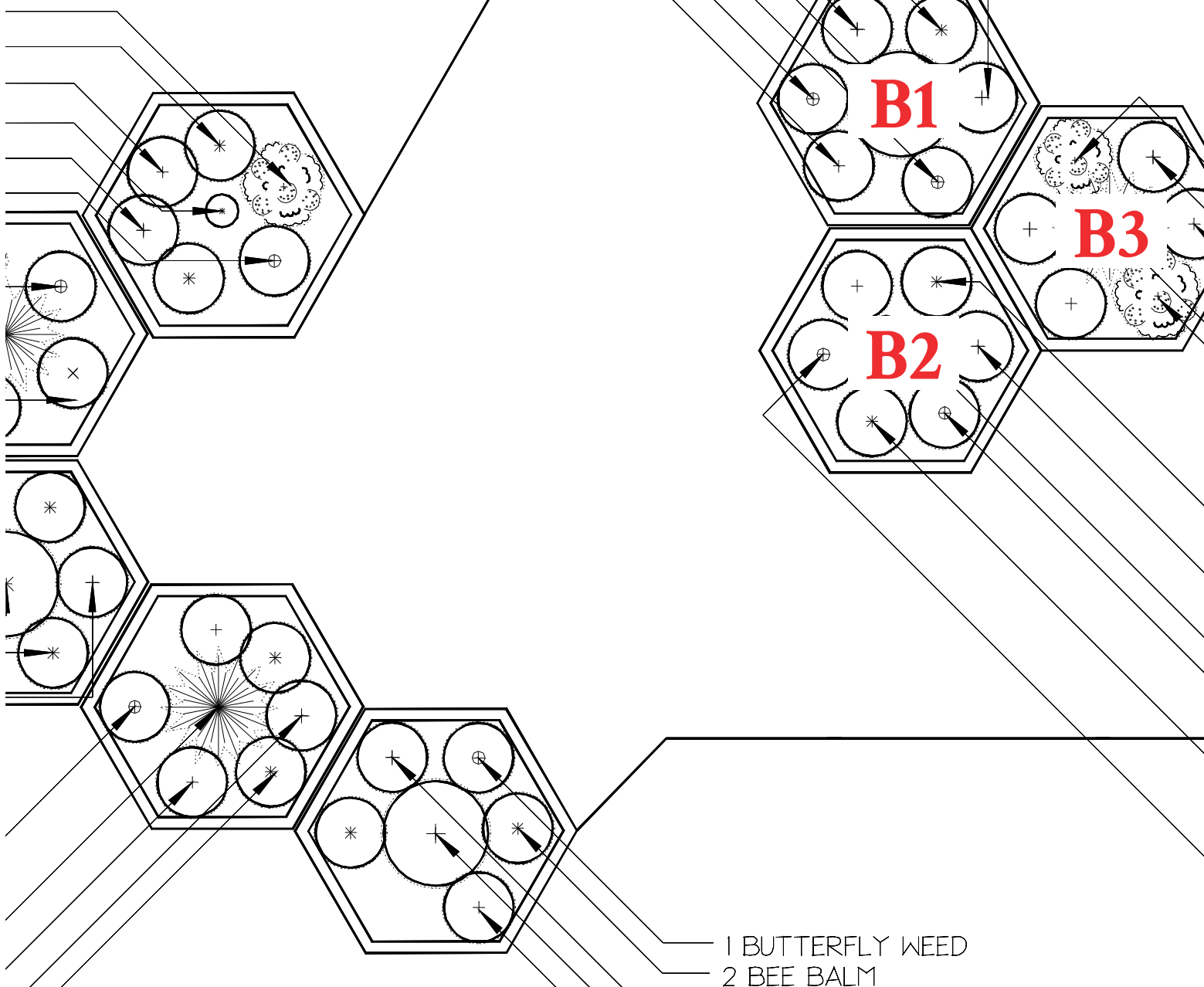
1 DWARF HUMMINGBIRD MINT

1 CHOCOLATE SNAKEROOT / JOE PYE WEED

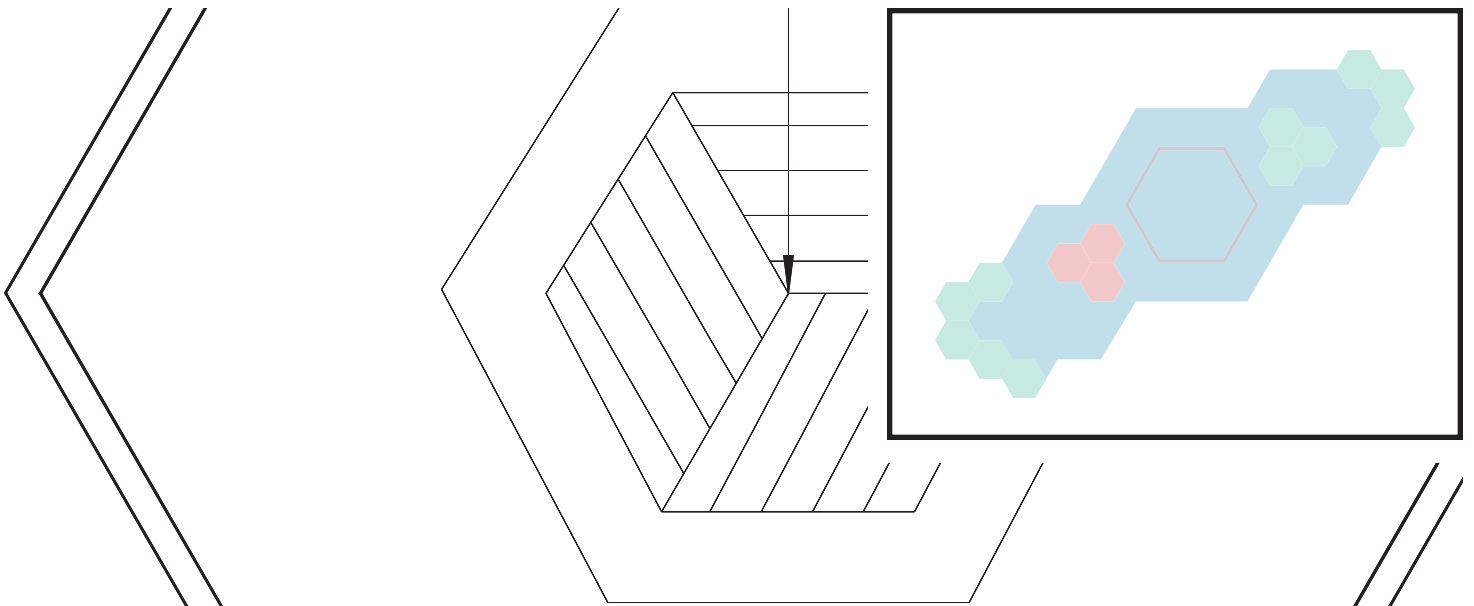
1 WHITE SWAN PURPLE CONEFLOWER

1 ROCK SOAPWORT

1 DROPMORE CATMINT



1 BUTTERFLY WEED
2 BEE BALM



1 STONECROP 'MR. GOODBUD'

2 BEE BALM

2 DROPMORE CATMINT

1 SHENANDOAH SWITCH GRASS

1 CLASS ACT SEDUM

1 BLUE FORTUNE MEXICAN HYSSOP

1 GOLDSTURM CONEFLOWER

2 NEW YORK IRONWEED

1 RED ROCKS PENSTEMON

1 KOBOLD SPIKED BLAZING STAR

1 CONEFLOWER 'LEMON YELLOW'

Group B



Butterfly Weed

B1

Bloom: June-August



Aromatic Aster

B1

Bloom: August-September



Dwarf Hummingbird Mint

B1

Bloom: Spring-Fall



Chocolate Snakeroot/Joe Pye Weed, B1

Bloom: Summer



White Swan Purple Coneflower

B1

Bloom: June-August



Rock Soapwort

B1

Bloom: Spring-Early Summer



Dropmore Catmint

B1, B3

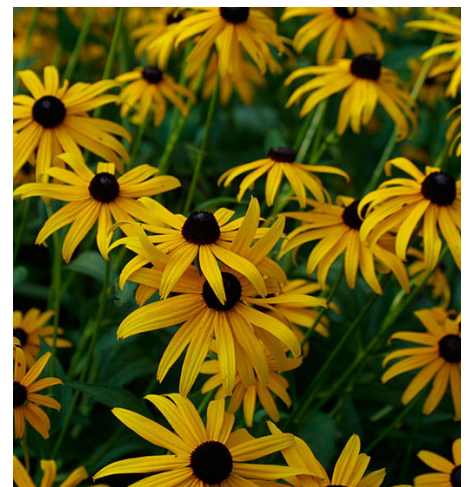
Bloom: Summer-Early Fall



Blue Fortune Mexican Hyssop

B2

Bloom: Summer



Goldsturm Coneflower

B1

Bloom: Midsummer-Mid Fall



New York Ironweed

B2

Bloom: August-September



Red Rocks Penstemon

B2

Bloom: Summer-Fall



Kobold Spiked Blazing Star

B2

Bloom: July-August



Coneflower 'Lemon Yellow'

B2

Bloom: Late Spring-Summer



Stonecrop 'Mr. Goodbud'

B3

Bloom: August



Bee Balm

B3

Bloom: Mid-Late Summer



Shenandoah Switchgrass

B3

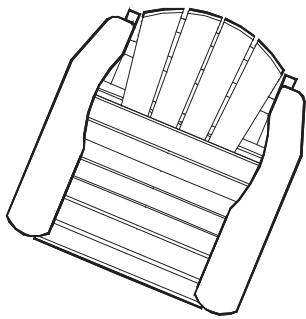
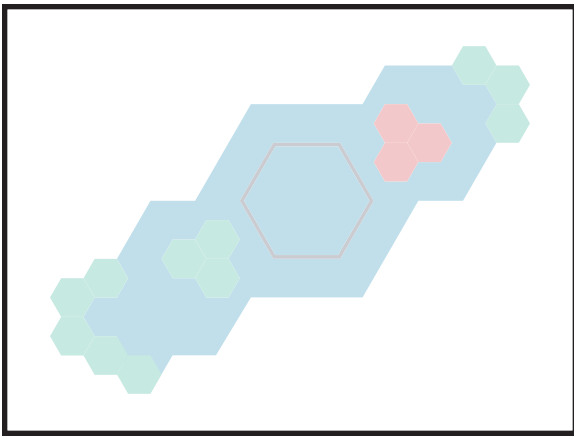
Bloom: Spring-Fall



Class Act Sedum

B3

Bloom: August-September



1 HUMMINGBIRD SUMMER SWEET
6 SWEET WOODRUFF

1 DEUTSCHLAND ASTILBE

1 HAIRY ALUMROOT

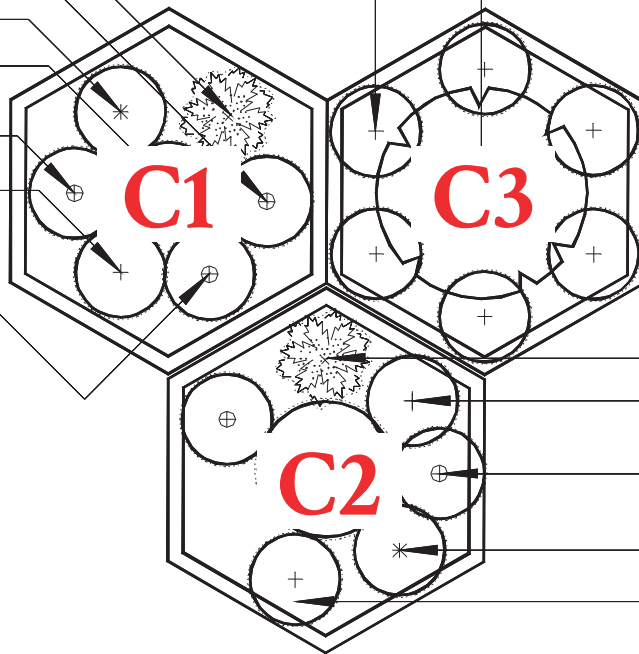
1 CREEPING PHLOX

1 JAPANESE IRIS

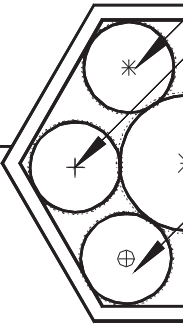
1 ROSE MARVEL SALVIA

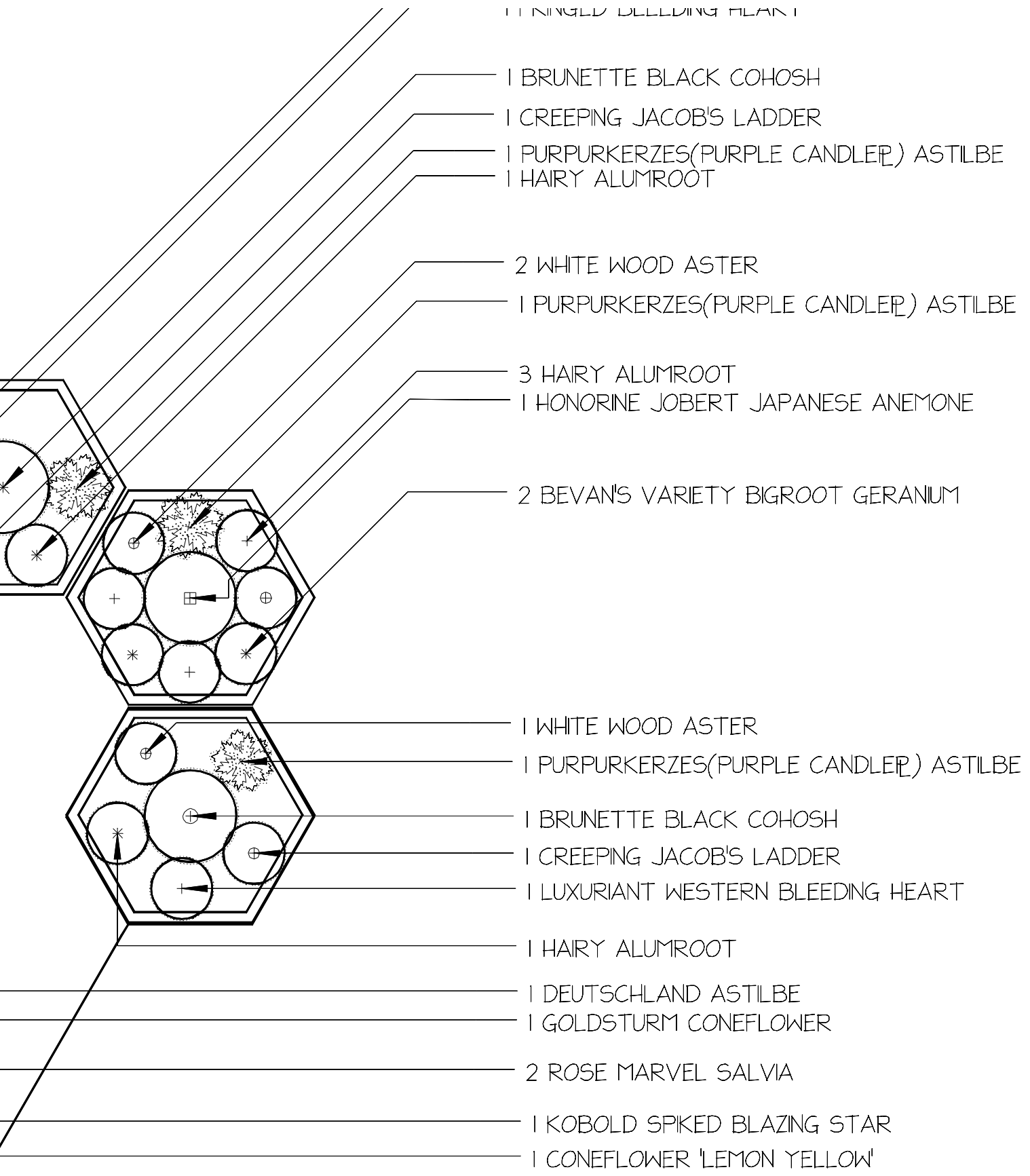
1 MAYBREEZE WOODLAND PHLOX

1 BLUE PHLOX



AL PICNIC TABLE





LUXURIANT WESTERN BLEEDING HEART

- 1 BRUNETTE BLACK COHOSH
- 1 CREEPING JACOB'S LADDER
- 1 PURPURKERZES(PURPLE CANDLEP) ASTILBE
- 1 HAIRY ALUMROOT

- 2 WHITE WOOD ASTER
- 1 PURPURKERZES(PURPLE CANDLEP) ASTILBE

- 3 HAIRY ALUMROOT
- 1 HONORINE JOBERT JAPANESE ANEMONE

- 2 BEVAN'S VARIETY BIGROOT GERANIUM

- 1 WHITE WOOD ASTER
- 1 PURPURKERZES(PURPLE CANDLEP) ASTILBE

- 1 BRUNETTE BLACK COHOSH
- 1 CREEPING JACOB'S LADDER
- 1 LUXURIANT WESTERN BLEEDING HEART

- 1 HAIRY ALUMROOT
- 1 DEUTSCHLAND ASTILBE
- 1 GOLDSTURM CONEFLOWER

- 2 ROSE MARVEL SALVIA
- 1 KOBOLD SPIKED BLAZING STAR
- 1 CONEFLOWER 'LEMON YELLOW'



Deutschland Astilbe

C1, C2

Bloom: Summer



Hairy Alumroot

C1

Bloom: July-September



Creeping Phlox

C1

Bloom: Spring



Japanese Iris

C1

Bloom: Early-Midsummer



Rose Marvel Salvia

C1, C2

Bloom: Early Spring-Summer



Maybreeze Woodland Phlox

C1

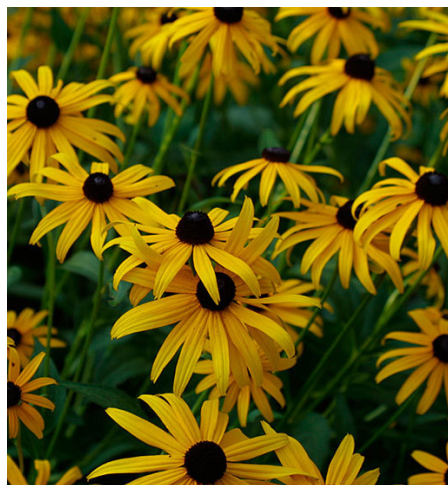
Bloom: Mid-Spring



Blue Phlox

C1

Bloom: March-May



Goldsturm Coneflower

C2

Bloom: Midsummer-Mid Fall



Kobold Spiked Blazing Star

C2

Bloom: July-August



Coneflower 'Lemon Yellow'

C2

Bloom: Late Spring-Summer



Hummingbird Summersweet

C3

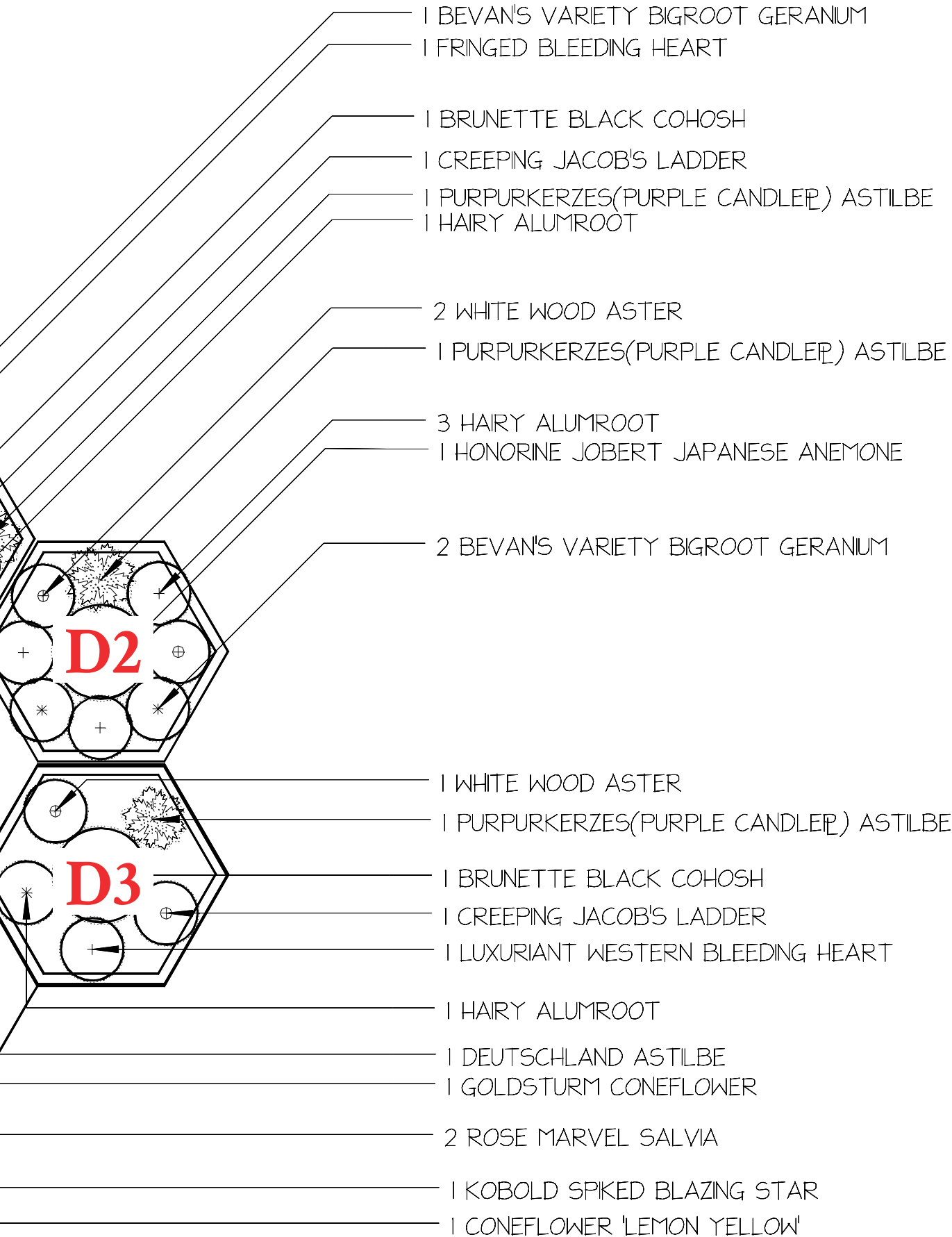
Bloom: Summer



Sweet Woodruff

C3

Bloom: April-May



Group D



Bevan's Variety Bigroot
Geranium, D1
Bloom: April-July



Fringed Bleeding Heart
D1
Bloom: Spring-Early Summer



Brunette Black Cohosh
D1, D3
Bloom: Late Summer-Fall



Creeping Jacob's Ladder
D1, D3
Bloom: April-June



Purpurkerzes (Purple Candle)
Astilbe, D1, D2, D3
Bloom: June-July



Hairy Alumroot
D1, D2
Bloom: July-September



White Wood Aster
D2, D3
Bloom: August-September



Honorine Jobert Japanese Anemone
D2
Bloom: Late Summer



Luxuriant Western Bleeding Heart
D3
Bloom: Late Spring-Fall



Brought to you by:
MIT Office of Sustainability, Grounds
Services, and UA Sustain

A large, stylized graphic composed of overlapping hexagons in shades of light blue and light green. The hexagons are arranged in a pattern that resembles a honeycomb or a molecular structure. A central hexagon is outlined in a thin, light brown border.

Thanks for visiting!